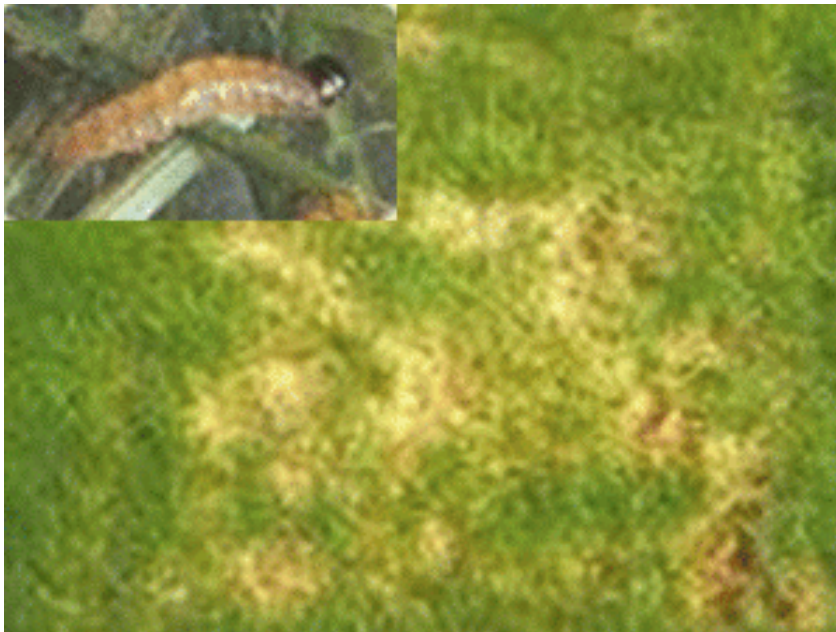


Sod Webworms

- Dead patches are 1-2 inches wide, with grass blades chewed off just above the thatch line.
- Usually prevalent in the hottest, driest areas of the lawn.
- Larvae are slender, black spotted grayish caterpillars approximately 3/4 inch long and sluggish in their activity.
- They hide during the day in shelters constructed of bits of grass and debris.
- Overwintering larvae emerge and feed at night or on overcast days in spring.
- They mature into moths in early summer and lay eggs, which hatch into larvae and repeat the cycle.
- There may be as many as three generations per season.



Weed Man®
TRUST THE PROFESSIONALS

Weed Man®